

SERVOLIFT

STACKABLE LIDDED DRUMS:

The drums are stackable on their lids, provided bottom "A" or "B" is taken. (see illustrations below) or can be provided with several different types of non-stackable bottoms which are also shown below.

All drums are available in 316-L stainless steel (304 for our food customers) and feature our "easy-remove" O-Ring design in the lid. The O-ring comes standard in silicone to FDA CFR 177.2600.


Finishing is supplied to any range, from mill finish specified Ra values with profilometer proofing. We can also recommend a finish based on your application. Additionally, our factory specializes in electro-polishing, which they do in house.



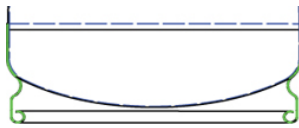
Liters	Ø D	H	H1	H2	Bottom	N	Border	H3	Model #
0.5	4.72"	2.6"	-	2.8"	B	0	0.35"	-	-
1	4.72"	4.2"	-	4.41"	B	0	0.35"	-	-
1.5	6.69"	2.79"	-	2.99"	B	0	0.32"	-	403293
2	7.09"	4.25"	-	4.45"	B	0	0.33"	-	-
3	7.09"	5.32"	-	5.52"	B	0	0.33"	-	400501
5	7.09"	9.84"	-	10.04"	B	0	0.33"	-	400502
3	9.84"	2.95"	-	3.15"	B	0	0.35"	-	-
5	9.84"	4.92"	-	5.12"	B	0	0.35"	-	403294
10	9.84"	8.66"	-	8.86"	B	0	0.35"	-	403121
20	12.4"	11.02"	8.86"	11.22"	A - B - C	0	0.37"	-	401208
30	12.4"	17.10"	14.96"	17.32"	A - B - C	0	0.37"	-	-
35	12.4"	19.09"	16.93"	19.29"	A - B - C	0	0.37"	-	401289
30	13.86"	17.78"	12.96"	13.98"	B	0	0.44"	-	-
50	13.86"	21.48"	20.67"	21.65"	B	0	0.44"	-	-
50	14.76"	19.69"	17.52"	19.88"	A - B	0	0.35"	-	-
75	14.76"	28.54"	26.38"	28.74"	A - B	0	0.35"	-	-
50	15.75"	17.91"	15.75"	18.11"	A - B - C	0	0.37"	-	401290
75	15.75"	25.20"	23.03"	25.39"	A - B - C	0	0.37"	8.00"	401291
100	15.75"	34.25"	32.09"	34.45"	A - B - C	0	0.37"	12.64"	401292
50	17.75"	14.57"	12.41"	14.76"	A - B - C	0	0.43"	-	406143
75	17.75"	19.88"	17.75"	20.08"	A - B - C	0	0.43"	-	401294
100	17.75"	25.98"	23.82"	26.18"	A - B - C	0	0.43"	8.50"	401295
100	19.69"	20.87"	18.70"	21.06"	A - B - C	0	0.37"	5.94"	401355
150	19.69"	30.91"	28.74"	31.10"	A - B - C	0	0.37"	11.26"	401298
100	22.05"	17.75"	15.55"	17.91"	A - C	0	0.37"	-	401259
150	22.05"	25.98"	23.82"	26.18"	A - C	2	0.37"	8.50"	401300
200	22.05"	34.65"	32.48"	34.84"	A - C	2	0.37"	12.83"	401301
260	22.05"	40.95"	37.78"	41.14"	A - C	4	0.37"	15.98"	40076

BASE OPTIONS

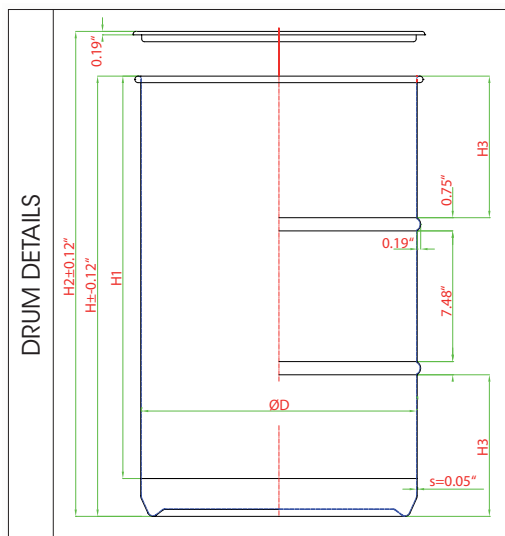
We offer two other standard base types or can provide a custom base to meet your exact requirements



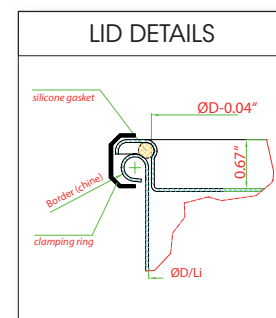
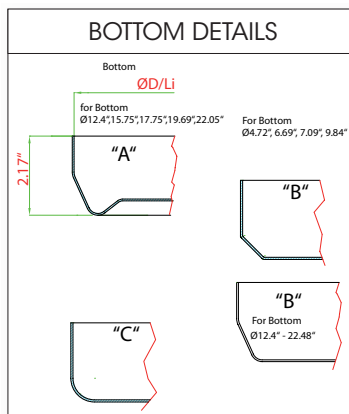
Skirt



Concave w/skirt



- * All drums come with or without swages (smooth walled).
- * N= number of swages (ribs) as standard



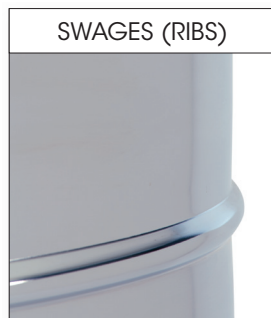
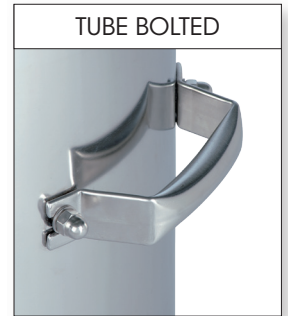


We are the experts

DRUM OPTIONS:

Bolz offers a whole host of options from drum bases, rims, handles and bottoms

Here's a sample of common options, we can offer virtually any custom request you have, please inquire!



DRUM DOLLIES:

We offer 2 standard dolly types and any custom dolly for any drum

PUSH CART TYPE: Totally enclosed tubing push handle for ergonomic loading and moving. Flat table with safety slide-off lip at front. Offered for all capacities of drums. The unit features solid stainless steel construction with a #220 grit finish (GMP). Two fixed front wheels and two swivel, locking rear castors. Wheels feature non-marking materials, sealed bearings and stainless steel housings.

PAN TYPE: Pressed pan unit, designed to be an "integral" part of the drum. Ideal for processes that need maximum manoeuvrability. The units feature a solid stainless steel design with a #220 grit finish (GMP) and center water-drain hole. Five (5) swivel castors, two with break unit. Wheels feature non-marking materials, sealed bearings and stainless steel housings.

